

## Product datasheet for **TA360899**

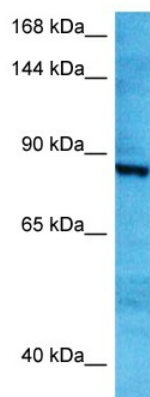
### **FAM120B Rabbit Polyclonal Antibody**

#### **Product data:**

Product Type:	Primary Antibodies
Applications:	WB
Reactivity:	Human
Host:	Rabbit
Clonality:	Polyclonal
Immunogen:	The immunogen is a synthetic peptide directed towards the N terminal region of human FAM120B
Specificity:	<b>Expected reactivity:</b> Human
Formulation:	Liquid. Purified antibody supplied in 1x PBS buffer with 0.09% (w/v) sodium azide and 2% sucrose. <i>Note that this product is shipped as lyophilized powder to China customers.</i>
Concentration:	lot specific
Purification:	Affinity purified
Conjugation:	Unconjugated
Storage:	For short term use, store at 2-8°C up to 1 week. For long term storage, store at -20°C in small aliquots to prevent freeze-thaw cycles.
Stability:	Shelf life: one year from despatch.
Predicted Protein Size:	87 kDa
Gene Name:	family with sequence similarity 120B
Database Link:	<a href="#">NP_001273310.1</a> <a href="#">Entrez Gene 84498 Human</a> <a href="#">Q96EK7-2</a>
Background:	Functions as a transactivator of PPARG and ESR1. Functions in adipogenesis through PPARG activation.
Synonyms:	CCPG; dj894D12.1; FLJ55614; KIAA0183; KIAA1838; PGCC1



[View online »](#)

**Product images:**

Host: Rabbit  
Target Name: FAM120B  
Sample Type: PANC1 Cell Lysate  
Antibody Dilution: 1.0 $\mu$ g/ml

Host: Rabbit  
Target Name: FAM120B  
Sample Tissue: Human PANC1 Whole Cell lysates  
Antibody Dilution: 1 $\mu$ g/ml