

Product datasheet for **TA360898**

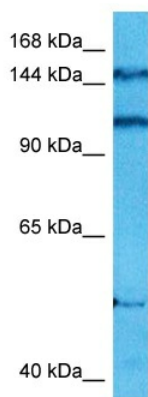
CEP128 Rabbit Polyclonal Antibody

Product data:

Product Type:	Primary Antibodies
Applications:	WB
Reactivity:	Human
Host:	Rabbit
Clonality:	Polyclonal
Immunogen:	The immunogen is a synthetic peptide directed towards the middle region of human C14ORF145
Specificity:	Expected reactivity: Human
Formulation:	Liquid. Purified antibody supplied in 1x PBS buffer with 0.09% (w/v) sodium azide and 2% sucrose. <i>Note that this product is shipped as lyophilized powder to China customers.</i>
Concentration:	lot specific
Purification:	Affinity purified
Conjugation:	Unconjugated
Storage:	For short term use, store at 2-8°C up to 1 week. For long term storage, store at -20°C in small aliquots to prevent freeze-thaw cycles.
Stability:	Shelf life: one year from despatch.
Predicted Protein Size:	115 kDa
Gene Name:	centrosomal protein 128
Database Link:	NP_689659.2 Entrez Gene 145508 Human Q6ZU80
Synonyms:	4930534B04Rik; 5430424K18Rik; AI449708; AI480494; E230024F20



[View online »](#)

Product images:

Host: Rabbit
Target Name: C14orf145
Sample Type: OVCAR-3 Cell Lysate
Antibody Dilution: 1.0 μ g/ml

Host: Rabbit
Target Name: C14ORF145
Sample Tissue: Human OVCAR-3 Whole Cell
lysates
Antibody Dilution: 1 μ g/ml