

Product datasheet for **TA360881**

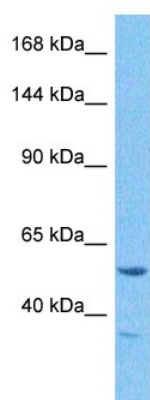
ZFP106 (ZNF106) Rabbit Polyclonal Antibody

Product data:

Product Type:	Primary Antibodies
Applications:	WB
Reactivity:	Human
Host:	Rabbit
Clonality:	Polyclonal
Immunogen:	The immunogen is a synthetic peptide directed towards the N terminal region of human ZFP106
Specificity:	Expected reactivity: Human
Formulation:	Liquid. Purified antibody supplied in 1x PBS buffer with 0.09% (w/v) sodium azide and 2% sucrose.
Concentration:	lot specific
Purification:	Affinity purified
Conjugation:	Unconjugated
Storage:	For short term use, store at 2-8°C up to 1 week. For long term storage, store at -20°C in small aliquots to prevent freeze-thaw cycles.
Stability:	Shelf life: one year from despatch.
Predicted Protein Size:	53 kDa
Gene Name:	zinc finger protein 106
Database Link:	NP_001271235.1 Entrez Gene 64397 Human Q0VGA6
Synonyms:	SH3BP3; ZFP106; ZNF474



[View online »](#)

Product images:

Host: Rabbit
Target Name: ZFP106
Sample Type: 786-0 Cell Lysate
Antibody Dilution: 1.0 μ g/ml

Host: Rabbit
Target Name: ZFP106
Sample Tissue: Human 786-0 Whole Cell lysates
Antibody Dilution: 1 μ g/ml