

Product datasheet for **TA360880**

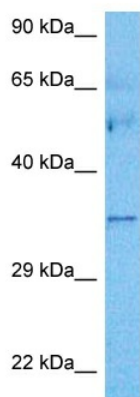
C1QTNF9 Rabbit Polyclonal Antibody

Product data:

Product Type:	Primary Antibodies
Applications:	WB
Reactivity:	Human
Host:	Rabbit
Clonality:	Polyclonal
Immunogen:	The immunogen is a synthetic peptide directed towards the middle region of human C1QTNF9
Specificity:	Expected reactivity: Human
Formulation:	Liquid. Purified antibody supplied in 1x PBS buffer with 0.09% (w/v) sodium azide and 2% sucrose.
Concentration:	lot specific
Purification:	Affinity purified
Conjugation:	Unconjugated
Storage:	For short term use, store at 2-8°C up to 1 week. For long term storage, store at -20°C in small aliquots to prevent freeze-thaw cycles.
Stability:	Shelf life: one year from despatch.
Predicted Protein Size:	36 kDa
Gene Name:	C1q and tumor necrosis factor related protein 9
Database Link:	NP_001290066.1 Entrez Gene 338872 Human P0C862
Synonyms:	C1QTNF9A; CTRP9; MGC48915; OTTHUMP00000018124



[View online »](#)

Product images:


Host: Rabbit
 Target Name: C1QTNF9
 Sample Type: Ovary Tumor Lysate
 Antibody Dilution: 1.0µg/ml

Host: Rabbit
 Target Name: C1QTNF9
 Sample Tissue: Human Ovary Tumor lysates
 Antibody Dilution: 1ug/ml