

Product datasheet for **TA360876**

PGRPS (PGLYRP1) Rabbit Polyclonal Antibody

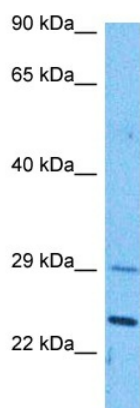
Product data:

| | |
|-------------------------|------------------------------------------------------------------------------------------------------------------------------------------------------------------------------------------------------------------------------------------------------------------------------------------------------------------------------------------------------------------------|
| Product Type: | Primary Antibodies |
| Applications: | WB |
| Reactivity: | Human |
| Host: | Rabbit |
| Clonality: | Polyclonal |
| Immunogen: | The immunogen is a synthetic peptide directed towards the C terminal region of human PGLYRP1 |
| Specificity: | Expected reactivity: Human |
| Formulation: | Liquid. Purified antibody supplied in 1x PBS buffer with 0.09% (w/v) sodium azide and 2% sucrose. <i>Note that this product is shipped as lyophilized powder to China customers.</i> |
| Concentration: | lot specific |
| Purification: | Affinity purified |
| Conjugation: | Unconjugated |
| Storage: | For short term use, store at 2-8°C up to 1 week. For long term storage, store at -20°C in small aliquots to prevent freeze-thaw cycles. |
| Stability: | Shelf life: one year from despatch. |
| Predicted Protein Size: | 22 kDa |
| Gene Name: | peptidoglycan recognition protein 1 |
| Database Link: | NP_005082.1 Entrez Gene 8993 Human O75594 |
| Background: | Pattern receptor that binds to murein peptidoglycans (PGN) of Gram-positive bacteria. Has bactericidal activity towards Gram-positive bacteria. May kill Gram-positive bacteria by interfering with peptidoglycan biosynthesis. Binds also to Gram-negative bacteria, and has bacteriostatic activity towards Gram-negative bacteria. Plays a role in innate immunity. |
| Synonyms: | MGC126894; MGC126896; PGLYRP; PGRP; PGRP-S; PGRPS; TAG7; TNFSF3L |
| Protein Families: | Druggable Genome, Secreted Protein |



[View online »](#)

Product images:



Host: Rabbit
Target Name: PGLYRP1
Sample Type: 293T Cell Lysate
Antibody Dilution: 1.0 μ g/ml

Host: Rabbit
Target Name: PGLYRP1
Sample Tissue: Human 293T Whole Cell lysates
Antibody Dilution: 1 μ g/ml