

Product datasheet for **TA360875**

USH1C Rabbit Polyclonal Antibody

Product data:

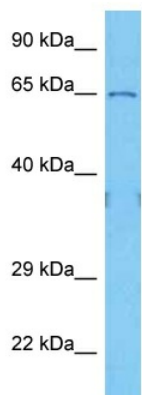
Product Type:	Primary Antibodies
Applications:	WB
Reactivity:	Human
Host:	Rabbit
Clonality:	Polyclonal
Immunogen:	The immunogen is a synthetic peptide directed towards the middle terminal region of human USH1C
Specificity:	Expected reactivity: Human
Formulation:	Liquid. Purified antibody supplied in 1x PBS buffer with 0.09% (w/v) sodium azide and 2% sucrose. <i>Note that this product is shipped as lyophilized powder to China customers.</i>
Concentration:	lot specific
Purification:	Affinity purified
Conjugation:	Unconjugated
Storage:	For short term use, store at 2-8°C up to 1 week. For long term storage, store at -20°C in small aliquots to prevent freeze-thaw cycles.
Stability:	Shelf life: one year from despatch.
Predicted Protein Size:	60 kDa
Gene Name:	USH1 protein network component harmonin
Database Link:	NP_001284693.1 Entrez Gene 10083 Human Q9Y6N9
Background:	This gene encodes a scaffold protein that functions in the assembly of Usher protein complexes. The protein contains PDZ domains, a coiled-coil region with a bipartite nuclear localization signal and a PEST degradation sequence. Defects in this gene are the cause of Usher syndrome type 1C and non-syndromic sensorineural deafness autosomal recessive type 18. Multiple transcript variants encoding different isoforms have been found for this gene.



[View online »](#)

Synonyms: AIE-75; AIE75; DFNB18; harmonin; NY-CO-37; NY-CO-38; PDZ-45; PDZ-73; PDZ-73/NY-CO-38; PDZ73; ush1cpst

Product images:



Host: Rabbit
 Target Name: USH1C
 Sample Type: Du145 Cell Lysate
 Antibody Dilution: 1.0µg/ml

Host: Rabbit
 Target Name: USH1C
 Sample Tissue: Human Du145 Whole Cell lysates
 Antibody Dilution: 1ug/ml