

Product datasheet for **TA360871**

C2orf3 (GCFC2) Rabbit Polyclonal Antibody

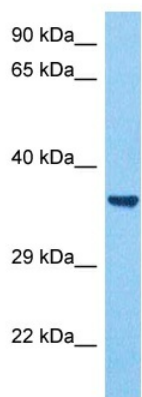
Product data:

Product Type:	Primary Antibodies
Applications:	WB
Reactivity:	Human
Host:	Rabbit
Clonality:	Polyclonal
Immunogen:	The immunogen is a synthetic peptide directed towards the middle terminal region of human TCF9
Specificity:	Expected reactivity: Human
Formulation:	Liquid. Purified antibody supplied in 1x PBS buffer with 0.09% (w/v) sodium azide and 2% sucrose.
Concentration:	lot specific
Purification:	Affinity purified
Conjugation:	Unconjugated
Storage:	For short term use, store at 2-8°C up to 1 week. For long term storage, store at -20°C in small aliquots to prevent freeze-thaw cycles.
Stability:	Shelf life: one year from despatch.
Predicted Protein Size:	37 kDa
Gene Name:	GC-rich sequence DNA-binding factor 2
Database Link:	NP_001188263.1 Entrez Gene 6936 Human A4UHR0
Background:	The first mRNA transcript isolated for this gene was part of an artificial chimera derived from two distinct gene transcripts and a primer used in the cloning process (see Genbank accession M29204). A positively charged amino terminus present only in the chimera was determined to bind GC-rich DNA, thus mistakenly thought to identify a transcription factor gene.
Synonyms:	A130099G21; AW146020; GCF2; RGD1304792; Tcf9
Protein Families:	Transcription Factors



[View online »](#)

Product images:



Host: Rabbit
Target Name: TCF9
Sample Type: Stomach Tumor Lysate
Antibody Dilution: 1.0 μ g/ml

Host: Rabbit
Target Name: TCF9
Sample Tissue: Human Stomach Tumor lysates
Antibody Dilution: 1 μ g/ml