

## Product datasheet for **TA360869**

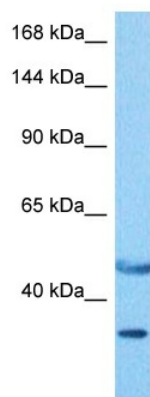
### DIS (CCAR1) Rabbit Polyclonal Antibody

#### Product data:

Product Type:	Primary Antibodies
Applications:	WB
Reactivity:	Human
Host:	Rabbit
Clonality:	Polyclonal
Immunogen:	The immunogen is a synthetic peptide directed towards the middle region of human CCAR1
Specificity:	<b>Expected reactivity:</b> Human
Formulation:	Liquid. Purified antibody supplied in 1x PBS buffer with 0.09% (w/v) sodium azide and 2% sucrose. <i>Note that this product is shipped as lyophilized powder to China customers.</i>
Concentration:	lot specific
Purification:	Affinity purified
Conjugation:	Unconjugated
Storage:	For short term use, store at 2-8°C up to 1 week. For long term storage, store at -20°C in small aliquots to prevent freeze-thaw cycles.
Stability:	Shelf life: one year from despatch.
Predicted Protein Size:	31 kDa
Gene Name:	cell division cycle and apoptosis regulator 1
Database Link:	<a href="#">NP_001269888.1</a> <a href="#">Entrez Gene 55749 Human</a> <a href="#">H0YFI7</a>
Synonyms:	CARP-1; CARP1; DIS; FLJ10590; MGC44628; RP11-437A18.1



[View online »](#)

**Product images:**

Host: Rabbit  
Target Name: CCAR1  
Sample Type: Lung Tumor Lysate  
Antibody Dilution: 1.0 $\mu$ g/ml

Host: Rabbit  
Target Name: CCAR1  
Sample Tissue: Human Lung Tumor lysates  
Antibody Dilution: 1  $\mu$ g/ml