

Product datasheet for **TA360866**

LINGO1 Rabbit Polyclonal Antibody

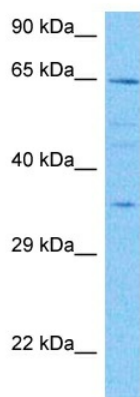
Product data:

Product Type:	Primary Antibodies
Applications:	WB
Reactivity:	Human
Host:	Rabbit
Clonality:	Polyclonal
Immunogen:	The immunogen is a synthetic peptide directed towards the middle region of human LINGO1
Specificity:	Expected reactivity: Human
Formulation:	Liquid. Purified antibody supplied in 1x PBS buffer with 0.09% (w/v) sodium azide and 2% sucrose. <i>Note that this product is shipped as lyophilized powder to China customers.</i>
Concentration:	lot specific
Purification:	Affinity purified
Conjugation:	Unconjugated
Storage:	For short term use, store at 2-8°C up to 1 week. For long term storage, store at -20°C in small aliquots to prevent freeze-thaw cycles.
Stability:	Shelf life: one year from despatch.
Predicted Protein Size:	67 kDa
Gene Name:	leucine rich repeat and Ig domain containing 1
Database Link:	NP_001288115.1 Entrez Gene 84894 Human Q96FE5-2
Synonyms:	FLJ14594; LERN1; LRRN6A; MGC17422; UNQ201
Protein Families:	Druggable Genome, Transmembrane



[View online »](#)

Product images:



Host: Rabbit
Target Name: LINGO1
Sample Type: HeLa Cell Lysate
Antibody Dilution: 1.0 μ g/ml

Host: Rabbit
Target Name: LINGO1
Sample Tissue: Human HeLa Whole Cell lysates
Antibody Dilution: 1 μ g/ml