

Product datasheet for **TA360861**

SLC4A8 Rabbit Polyclonal Antibody

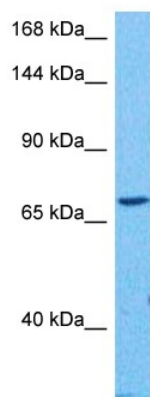
Product data:

Product Type:	Primary Antibodies
Applications:	WB
Reactivity:	Human
Host:	Rabbit
Clonality:	Polyclonal
Immunogen:	The immunogen is a synthetic peptide directed towards the N terminal region of human SLC4A8
Specificity:	Expected reactivity: Human
Formulation:	Liquid. Purified antibody supplied in 1x PBS buffer with 0.09% (w/v) sodium azide and 2% sucrose.
Concentration:	lot specific
Purification:	Affinity purified
Conjugation:	Unconjugated
Storage:	For short term use, store at 2-8°C up to 1 week. For long term storage, store at -20°C in small aliquots to prevent freeze-thaw cycles.
Stability:	Shelf life: one year from despatch.
Predicted Protein Size:	76 kDa
Gene Name:	solute carrier family 4 member 8
Database Link:	NP_001035049.1 Entrez Gene 9498 Human Q2Y0W8-6
Background:	The protein encoded by this gene is a membrane protein that functions to transport sodium and bicarbonate ions across the cell membrane. The encoded protein is important for pH regulation in neurons. The activity of this protein can be inhibited by 4,4'-Di-isothiocyanatostilbene-2,2'-disulfonic acid (DIDS). Several transcript variants encoding different isoforms have been found for this gene.
Synonyms:	DKFZp761B2318; FLJ46462; k-NBC3; KIAA0739; NBC; NBC3; NDCBE; NDCBE1
Protein Families:	Druggable Genome, Transmembrane



[View online »](#)

Product images:



Host: Rabbit
Target Name: SLC4A8
Sample Type: Jurkat Cell Lysate
Antibody Dilution: 1.0 μ g/ml

Host: Rabbit
Target Name: SLC4A8
Sample Tissue: Human Jurkat Whole Cell lysates
Antibody Dilution: 1 μ g/ml