

Product datasheet for **TA360857**

SART2 (DSE) Rabbit Polyclonal Antibody

Product data:

Product Type:	Primary Antibodies
Applications:	WB
Reactivity:	Human
Host:	Rabbit
Clonality:	Polyclonal
Immunogen:	The immunogen is a synthetic peptide directed towards the middle region of human DSE
Specificity:	Expected reactivity: Human
Formulation:	Liquid. Purified antibody supplied in 1x PBS buffer with 0.09% (w/v) sodium azide and 2% sucrose. <i>Note that this product is shipped as lyophilized powder to China customers.</i>
Concentration:	lot specific
Purification:	Affinity purified
Conjugation:	Unconjugated
Storage:	For short term use, store at 2-8°C up to 1 week. For long term storage, store at -20°C in small aliquots to prevent freeze-thaw cycles.
Stability:	Shelf life: one year from despatch.
Predicted Protein Size:	105 kDa
Gene Name:	dermatan sulfate epimerase
Database Link:	NP_001074445.1 Entrez Gene 29940 Human Q9UL01



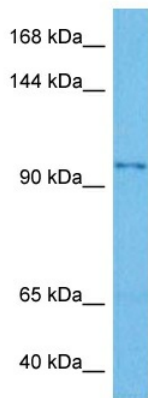
[View online »](#)

Background:

The protein encoded by this gene is a tumor-rejection antigen. It is localized to the endoplasmic reticulum and functions to convert D-glucuronic acid to L-iduronic acid during the biosynthesis of dermatan sulfate. This antigen possesses tumor epitopes capable of inducing HLA-A24-restricted and tumor-specific cytotoxic T lymphocytes in cancer patients and may be useful for specific immunotherapy. Mutations in this gene cause inmusculocontractural Ehlers-Danlos syndrome. Alternative splicing results in multiple transcript variants. A related pseudogene has been identified on chromosome 9, and a paralogous gene exists on chromosome 18.

Synonyms:

DSEPI; OTTHUMP00000017059; SART-2; SART2

Product images:

Host: Rabbit
Target Name: DSE
Sample Type: MCF7 Cell Lysate
Antibody Dilution: 1.0µg/ml

Host: Rabbit
Target Name: DSE
Sample Tissue: Human MCF7 Whole Cell lysates
Antibody Dilution: 3ug/ml