

## Product datasheet for **TA360856**

### **RAB24 Rabbit Polyclonal Antibody**

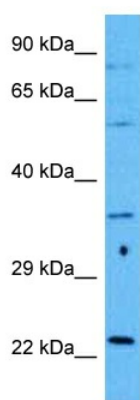
#### **Product data:**

Product Type:	Primary Antibodies
Applications:	WB
Reactivity:	Human
Host:	Rabbit
Clonality:	Polyclonal
Immunogen:	The immunogen is a synthetic peptide directed towards the middle terminal region of human RAB24
Specificity:	<b>Expected reactivity:</b> Human
Formulation:	Liquid. Purified antibody supplied in 1x PBS buffer with 0.09% (w/v) sodium azide and 2% sucrose. <i>Note that this product is shipped as lyophilized powder to China customers.</i>
Concentration:	lot specific
Purification:	Affinity purified
Conjugation:	Unconjugated
Storage:	For short term use, store at 2-8°C up to 1 week. For long term storage, store at -20°C in small aliquots to prevent freeze-thaw cycles.
Stability:	Shelf life: one year from despatch.
Predicted Protein Size:	22 kDa
Gene Name:	RAB24, member RAS oncogene family
Database Link:	<a href="#">NP_001026847.1</a> <a href="#">Entrez Gene 53917 Human Q969Q5</a>
Background:	RAB24 is a small GTPase of the Rab subfamily of Ras-related proteins that regulate intracellular protein trafficking.
Synonyms:	RAB24
Protein Families:	Druggable Genome



[View online »](#)

## Product images:



Host: Rabbit  
Target Name: RAB24  
Sample Type: LN18 Cell Lysate  
Antibody Dilution: 1.0 $\mu$ g/ml

Host: Rabbit  
Target Name: RAB24  
Sample Tissue: Human LN18 Whole Cell lysates  
Antibody Dilution: 1 $\mu$ g/ml