

Product datasheet for **TA360854**

Hemopexin (HPX) Rabbit Polyclonal Antibody

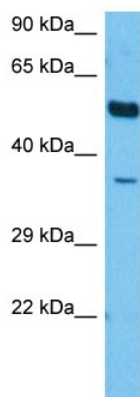
Product data:

Product Type:	Primary Antibodies
Applications:	WB
Reactivity:	Human
Host:	Rabbit
Clonality:	Polyclonal
Immunogen:	The immunogen is a synthetic peptide directed towards the middle region of human HPX
Specificity:	Expected reactivity: Human
Formulation:	Liquid. Purified antibody supplied in 1x PBS buffer with 0.09% (w/v) sodium azide and 2% sucrose. <i>Note that this product is shipped as lyophilized powder to China customers.</i>
Concentration:	lot specific
Purification:	Affinity purified
Conjugation:	Unconjugated
Storage:	For short term use, store at 2-8°C up to 1 week. For long term storage, store at -20°C in small aliquots to prevent freeze-thaw cycles.
Stability:	Shelf life: one year from despatch.
Predicted Protein Size:	50 kDa
Gene Name:	hemopexin
Database Link:	NP_000604.1 Entrez Gene 3263 Human P02790
Background:	This gene encodes a plasma glycoprotein that binds heme with high affinity. The encoded protein is an acute phase protein that transports heme from the plasma to the liver and may be involved in protecting cells from oxidative stress.
Synonyms:	beta-1B-glycoprotein; FLJ56652; hemopexin; HX
Protein Families:	Secreted Protein



[View online »](#)

Product images:



Host: Rabbit
Target Name: HPX
Sample Type: Mesenchymoma Tumor Lysate
Antibody Dilution: 1.0µg/ml

Host: Rabbit
Target Name: HPX
Sample Tissue: Human Mesenchymoma Tumor lysates
Antibody Dilution: 1ug/ml