

Product datasheet for **TA360853**

RASAL3 Rabbit Polyclonal Antibody

Product data:

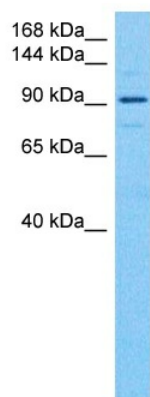
Product Type:	Primary Antibodies
Applications:	WB
Reactivity:	Human
Host:	Rabbit
Clonality:	Polyclonal
Immunogen:	The immunogen is a synthetic peptide directed towards the N terminal region of human RASAL3
Specificity:	Expected reactivity: Human
Formulation:	Liquid. Purified antibody supplied in 1x PBS buffer with 0.09% (w/v) sodium azide and 2% sucrose.
Concentration:	lot specific
Purification:	Affinity purified
Conjugation:	Unconjugated
Storage:	For short term use, store at 2-8°C up to 1 week. For long term storage, store at -20°C in small aliquots to prevent freeze-thaw cycles.
Stability:	Shelf life: one year from despatch.
Predicted Protein Size:	103 kDa
Gene Name:	RAS protein activator like 3
Database Link:	NP_075055.1 Entrez Gene 64926 Human Q86YV0-2
Background:	This gene belongs to the Ras GTPase-activating proteins (RasGAP) family and encodes a protein with pleckstrin homology (PH), C2, and Ras GTPase-activation protein (RasGAP) domains. This protein is localized near or at the plasma membrane when expressed exogenously. Reduced expression of this gene in some cell lines resulted in increased levels of the active form of Ras (Ras-GTP), suggesting that this gene may play a role in negatively regulating the Ras signaling pathway. Alternative splicing results in multiple transcript variants encoding different isoforms.Â



[View online »](#)

Synonyms: DKFZp667E013; FLJ00087; FLJ21438

Product images:



Host: Rabbit
Target Name: RASAL3
Sample Type: Lung Tumor Lysate
Antibody Dilution: 1.0 μ g/ml

Host: Rabbit
Target Name: RASAL3
Sample Tissue: Human Lung Tumor lysates
Antibody Dilution: 1 μ g/ml