

## Product datasheet for **TA360850**

### PGRMC2 Rabbit Polyclonal Antibody

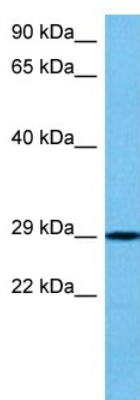
#### Product data:

Product Type:	Primary Antibodies
Applications:	WB
Reactivity:	Human
Host:	Rabbit
Clonality:	Polyclonal
Immunogen:	The immunogen is a synthetic peptide directed towards the N terminal region of human PGRMC2
Specificity:	<b>Expected reactivity:</b> Human
Formulation:	Liquid. Purified antibody supplied in 1x PBS buffer with 0.09% (w/v) sodium azide and 2% sucrose. <i>Note that this product is shipped as lyophilized powder to China customers.</i>
Concentration:	lot specific
Purification:	Affinity purified
Conjugation:	Unconjugated
Storage:	For short term use, store at 2-8°C up to 1 week. For long term storage, store at -20°C in small aliquots to prevent freeze-thaw cycles.
Stability:	Shelf life: one year from despatch.
Predicted Protein Size:	27 kDa
Gene Name:	progesterone receptor membrane component 2
Database Link:	<a href="#">NP_006311.2</a> <a href="#">Entrez Gene 10424 Human</a> <a href="#">O15173-2</a>
Background:	Receptor for steroids.
Synonyms:	DG6; PMBP
Protein Families:	Druggable Genome, Nuclear Hormone Receptor, Transmembrane



[View online »](#)

## Product images:



Host: Rabbit  
Target Name: PGRMC2  
Sample Type: U937 Cell Lysate  
Antibody Dilution: 1.0 $\mu$ g/ml

Host: Rabbit  
Target Name: PGRMC2  
Sample Tissue: Human U937 Whole Cell lysates  
Antibody Dilution: 1  $\mu$ g/ml