

Product datasheet for **TA360831**

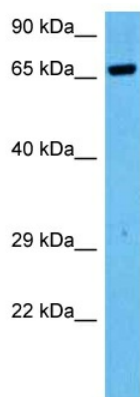
KBTBD5 (KLHL40) Rabbit Polyclonal Antibody

Product data:

Product Type:	Primary Antibodies
Applications:	WB
Reactivity:	Human
Host:	Rabbit
Clonality:	Polyclonal
Immunogen:	The immunogen is a synthetic peptide directed towards the middle region of human KBTBD5
Specificity:	Expected reactivity: Human
Formulation:	Liquid. Purified antibody supplied in 1x PBS buffer with 0.09% (w/v) sodium azide and 2% sucrose.
Concentration:	lot specific
Purification:	Affinity purified
Conjugation:	Unconjugated
Storage:	For short term use, store at 2-8°C up to 1 week. For long term storage, store at -20°C in small aliquots to prevent freeze-thaw cycles.
Stability:	Shelf life: one year from despatch.
Predicted Protein Size:	68 kDa
Gene Name:	kelch like family member 40
Database Link:	NP_689606.2 Entrez Gene 131377 Human Q2TBA0
Background:	This gene encodes a protein containing a BACK domain, a BTB/POZ domain, and 5 Kelch repeats, however, its exact function is not known. The gene and the multi-domain protein structure are conserved across different taxa, including primates, rodents, chicken and zebrafish.
Synonyms:	KBTBD5; SRYP



[View online »](#)

Product images:

Host: Rabbit
Target Name: KBTBD5
Sample Type: A172 Cell Lysate
Antibody Dilution: 1.0µg/ml

Host: Rabbit
Target Name: KBTBD5
Sample Tissue: Human A172 Whole Cell lysates
Antibody Dilution: 1ug/ml