

Product datasheet for **TA360827**

ZC3HAV1 Rabbit Polyclonal Antibody

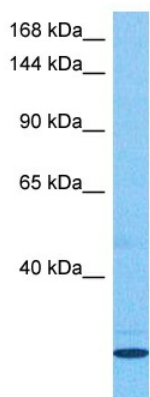
Product data:

Product Type:	Primary Antibodies
Applications:	WB
Reactivity:	Human
Host:	Rabbit
Clonality:	Polyclonal
Immunogen:	The immunogen is a synthetic peptide directed towards the middle region of human ZC3HAV1
Specificity:	Expected reactivity: Human
Formulation:	Liquid. Purified antibody supplied in 1x PBS buffer with 0.09% (w/v) sodium azide and 2% sucrose. <i>Note that this product is shipped as lyophilized powder to China customers.</i>
Concentration:	lot specific
Purification:	Affinity purified
Conjugation:	Unconjugated
Storage:	For short term use, store at 2-8°C up to 1 week. For long term storage, store at -20°C in small aliquots to prevent freeze-thaw cycles.
Stability:	Shelf life: one year from despatch.
Predicted Protein Size:	17 kDa
Gene Name:	zinc finger CCCH-type containing, antiviral 1
Database Link:	NP_064504.2 Entrez Gene 56829 Human Q7Z2W4-5
Background:	This gene encodes a CCCH-type zinc finger protein that is thought to prevent infection by retroviruses. Studies of the rat homolog indicate that the protein may primarily function to inhibit viral gene expression and induce an innate immunity to viral infection. Alternative splicing occurs at this locus and two variants, each encoding distinct isoforms, are described.
Synonyms:	DKFZp686F2052; DKFZp686H1869; DKFZp686O19171; FLB6421; FLJ13288; MGC48898; ZAP; ZC3H2; ZC3HDC2



[View online »](#)

Product images:



Host: Rabbit
Target Name: ZC3HAV1
Sample Type: Lung Tumor Lysate
Antibody Dilution: 1.0 μ g/ml

Host: Rabbit
Target Name: ZC3HAV1
Sample Tissue: Human Lung Tumor lysates
Antibody Dilution: 1 μ g/ml