

Product datasheet for **TA360820**

Pancreatic alpha amylase (AMY2A) Rabbit Polyclonal Antibody

Product data:

Product Type:	Primary Antibodies
Applications:	WB
Reactivity:	Human
Host:	Rabbit
Clonality:	Polyclonal
Immunogen:	The immunogen is a synthetic peptide directed towards the C terminal region of human AMY2A
Specificity:	Expected reactivity: Human
Formulation:	Liquid. Purified antibody supplied in 1x PBS buffer with 0.09% (w/v) sodium azide and 2% sucrose. <i>Note that this product is shipped as lyophilized powder to China customers.</i>
Concentration:	lot specific
Purification:	Affinity purified
Conjugation:	Unconjugated
Storage:	For short term use, store at 2-8°C up to 1 week. For long term storage, store at -20°C in small aliquots to prevent freeze-thaw cycles.
Stability:	Shelf life: one year from despatch.
Predicted Protein Size:	54 kDa
Gene Name:	amylase, alpha 2A (pancreatic)
Database Link:	NP_001008222.1 Entrez Gene 276 Human Entrez Gene 279 Human Q6NSB3
Background:	This gene encodes a member of the alpha-amylase family of proteins. Amylases are secreted proteins that hydrolyze 1,4-alpha-glucoside bonds in oligosaccharides and polysaccharides, catalyzing the first step in digestion of dietary starch and glycogen. This gene and several family members are present in a gene cluster on chromosome 1. This gene encodes an amylase isoenzyme produced by the pancreas.
Synonyms:	alpha-amylase; AMY2; AMY2B; glycogenase; PA

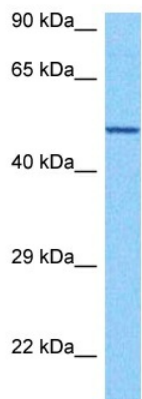


[View online »](#)

Protein Families: ES Cell Differentiation/IPS, Secreted Protein

Protein Pathways: Metabolic pathways, Starch and sucrose metabolism

Product images:



Host: Rabbit
Target Name: AMY2A
Sample Type: Jurkat Cell Lysate
Antibody Dilution: 1.0µg/ml

Host: Rabbit
Target Name: AMY2A
Sample Tissue: Human Jurkat Whole Cell lysates
Antibody Dilution: 1ug/ml