

## Product datasheet for **TA360814**

### NME2 Rabbit Polyclonal Antibody

#### Product data:

Product Type:	Primary Antibodies
Applications:	WB
Reactivity:	Human
Host:	Rabbit
Clonality:	Polyclonal
Immunogen:	The immunogen is a synthetic peptide directed towards the middle region of human NME2
Specificity:	<b>Expected reactivity:</b> Human
Formulation:	Liquid. Purified antibody supplied in 1x PBS buffer with 0.09% (w/v) sodium azide and 2% sucrose. <i>Note that this product is shipped as lyophilized powder to China customers.</i>
Concentration:	lot specific
Purification:	Affinity purified
Conjugation:	Unconjugated
Storage:	For short term use, store at 2-8°C up to 1 week. For long term storage, store at -20°C in small aliquots to prevent freeze-thaw cycles.
Stability:	Shelf life: one year from despatch.
Predicted Protein Size:	29 kDa
Gene Name:	NME/NM23 nucleoside diphosphate kinase 2
Database Link:	<a href="#">NP_001018146.1</a> <a href="#">Entrez Gene 654364 Human</a> <a href="#">Entrez Gene 4831 Human</a> <a href="#">P22392-2</a>
Background:	Nucleoside diphosphate kinase (NDK) exists as a hexamer composed of 'A' (encoded by NME1) and 'B' (encoded by this gene) isoforms. Multiple alternatively spliced transcript variants have been found for this gene. Read-through transcription from the neighboring upstream gene (NME1) generates naturally-occurring transcripts (NME1-NME2) that encode a fusion protein comprised of sequence sharing identity with each individual gene product.
Synonyms:	MGC111212; NDPK-B; NDPKB; NM23-H2; NM23B; OTTHUMP00000174728; OTTHUMP00000174774; OTTHUMP00000174775; OTTHUMP00000174776; puf

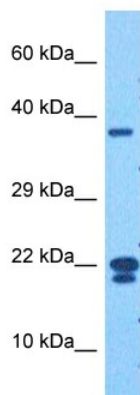


[View online »](#)

Protein Families: Druggable Genome, Stem cell - Pluripotency

Protein Pathways: Metabolic pathways, Purine metabolism, Pyrimidine metabolism

### Product images:



Host: Rabbit  
Target Name: NME2P1  
Sample Type: 293T Cell Lysate  
Antibody Dilution: 1.0 $\mu$ g/ml

Host: Rabbit  
Target Name: NME2P1  
Sample Tissue: Human 293T Whole Cell lysates  
Antibody Dilution: 1 $\mu$ g/ml