

## Product datasheet for **TA360811**

### DAP12 (TYROBP) Rabbit Polyclonal Antibody

#### Product data:

Product Type:	Primary Antibodies
Applications:	WB
Reactivity:	Human, Mouse
Host:	Rabbit
Clonality:	Polyclonal
Immunogen:	The immunogen is a synthetic peptide directed towards the middle region of human TYROBP
Specificity:	<b>Expected reactivity:</b> Human
Formulation:	Liquid. Purified antibody supplied in 1x PBS buffer with 0.09% (w/v) sodium azide and 2% sucrose. <i>Note that this product is shipped as lyophilized powder to China customers.</i>
Concentration:	lot specific
Purification:	Affinity purified
Conjugation:	Unconjugated
Storage:	For short term use, store at 2-8°C up to 1 week. For long term storage, store at -20°C in small aliquots to prevent freeze-thaw cycles.
Stability:	Shelf life: one year from despatch.
Predicted Protein Size:	15 kDa
Gene Name:	TYRO protein tyrosine kinase binding protein
Database Link:	<a href="#">NP_001166985.1</a> <a href="#">Entrez Gene 7305 Human</a> <a href="#">K7ES93</a>



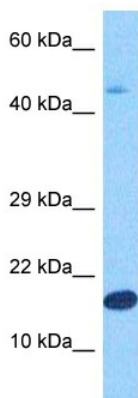
[View online »](#)

**Background:**

This gene encodes a transmembrane signaling polypeptide which contains an immunoreceptor tyrosine-based activation motif (ITAM) in its cytoplasmic domain. The encoded protein may associate with the killer-cell inhibitory receptor (KIR) family of membrane glycoproteins and may act as an activating signal transduction element. This protein may bind zeta-chain (TCR) associated protein kinase 70kDa (ZAP-70) and spleen tyrosine kinase (SYK) and play a role in signal transduction, bone modeling, brain myelination, and inflammation. Mutations within this gene have been associated with polycystic lipomembranous osteodysplasia with sclerosing leukoencephalopathy (PLOSL), also known as Nasu-Hakola disease. Its putative receptor, triggering receptor expressed on myeloid cells 2 (TREM2), also causes PLOSL. Multiple alternative transcript variants encoding distinct isoforms have been identified for this gene.

**Synonyms:**

DAP12; KARAP; PLO-SL; PLOSL

**Product images:**


Host: Rabbit  
 Target Name: TYROBP  
 Sample Type: HepG2 Cell Lysate  
 Antibody Dilution: 1.0µg/ml

Host: Rabbit  
 Target Name: TYROBP  
 Sample Tissue: Human HepG2 Whole Cell lysates  
 Antibody Dilution: 1ug/ml



Host: Rabbit  
 Target Name: Tyrobp  
 Sample Type: Mouse Testis Lysate  
 Antibody Dilution: 1.0µg/ml

Host: Mouse  
 Target Name: TYROBP  
 Sample Tissue: Mouse Testis  
 Antibody Dilution: 1ug/ml