

Product datasheet for **TA360805**

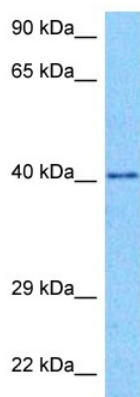
CAAP1 Rabbit Polyclonal Antibody

Product data:

Product Type:	Primary Antibodies
Applications:	WB
Reactivity:	Human
Host:	Rabbit
Clonality:	Polyclonal
Immunogen:	The immunogen is a synthetic peptide directed towards the middle region of human CAAP1
Specificity:	Expected reactivity: Human
Formulation:	Liquid. Purified antibody supplied in 1x PBS buffer with 0.09% (w/v) sodium azide and 2% sucrose.
Concentration:	lot specific
Purification:	Affinity purified
Conjugation:	Unconjugated
Storage:	For short term use, store at 2-8°C up to 1 week. For long term storage, store at -20°C in small aliquots to prevent freeze-thaw cycles.
Stability:	Shelf life: one year from despatch.
Predicted Protein Size:	39 kDa
Gene Name:	caspase activity and apoptosis inhibitor 1
Database Link:	NP_001161047.1 Entrez Gene 79886 Human Q9H8G2
Synonyms:	C9orf82; CAAP; RP11-337A23.1



[View online »](#)

Product images:


Host: Rabbit
 Target Name: C9orf82
 Sample Type: DLD1 Cell Lysate
 Antibody Dilution: 1.0µg/ml

Host: Rabbit
 Target Name: C9ORF82
 Sample Tissue: Human DLD1 Whole Cell lysates
 Antibody Dilution: 1ug/ml