

## Product datasheet for **TA360791**

### MYO1A Rabbit Polyclonal Antibody

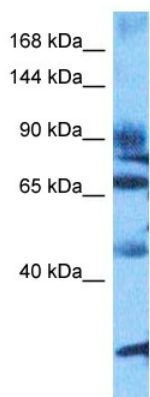
#### Product data:

Product Type:	Primary Antibodies
Applications:	WB
Reactivity:	Human
Host:	Rabbit
Clonality:	Polyclonal
Immunogen:	The immunogen is a synthetic peptide directed towards the middle region of human MYO1A
Specificity:	<b>Expected reactivity:</b> Human
Formulation:	Liquid. Purified antibody supplied in 1x PBS buffer with 0.09% (w/v) sodium azide and 2% sucrose.
Concentration:	lot specific
Purification:	Affinity purified
Conjugation:	Unconjugated
Storage:	For short term use, store at 2-8°C up to 1 week. For long term storage, store at -20°C in small aliquots to prevent freeze-thaw cycles.
Stability:	Shelf life: one year from despatch.
Predicted Protein Size:	75 kDa
Gene Name:	myosin IA
Database Link:	<a href="#">NP_001242970.1</a> <a href="#">Entrez Gene 4640 Human</a> <a href="#">G3V342</a>
Background:	This gene encodes a member of the myosin superfamily. The protein represents an unconventional myosin; it should not be confused with the conventional skeletal muscle myosin-1 (MYH1). Unconventional myosins contain the basic domains characteristic of conventional myosins and are further distinguished from class members by their tail domains. They function as actin-based molecular motors. Mutations in this gene have been associated with autosomal dominant deafness. Alternatively spliced variants have been found for this gene.
Synonyms:	BBM-I; BBMI; DFNA48; MIHC; MYHL



[View online »](#)

Product images:



Host: Rabbit  
Target Name: MYO1A  
Sample Type: Liver Tumor Lysate  
Antibody Dilution: 1.0 $\mu$ g/ml

Host: Rabbit  
Target Name: MYO1A  
Sample Tissue: Human Liver Tumor lysates  
Antibody Dilution: 1 ug/ml