

## Product datasheet for **TA360790**

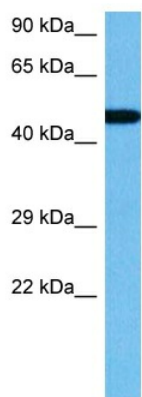
### TUBB4B Rabbit Polyclonal Antibody

#### Product data:

Product Type:	Primary Antibodies
Applications:	WB
Reactivity:	Human
Host:	Rabbit
Clonality:	Polyclonal
Immunogen:	The immunogen is a synthetic peptide directed towards the N terminal region of human TUBB2C
Specificity:	<b>Expected reactivity:</b> Human
Formulation:	Liquid. Purified antibody supplied in 1x PBS buffer with 0.09% (w/v) sodium azide and 2% sucrose. <i>Note that this product is shipped as lyophilized powder to China customers.</i>
Concentration:	lot specific
Purification:	Affinity purified
Conjugation:	Unconjugated
Storage:	For short term use, store at 2-8°C up to 1 week. For long term storage, store at -20°C in small aliquots to prevent freeze-thaw cycles.
Stability:	Shelf life: one year from despatch.
Predicted Protein Size:	48 kDa
Gene Name:	tubulin beta 4B class IVb
Database Link:	<a href="#">NP_006079.1</a> <a href="#">Entrez Gene 10383 Human</a> <a href="#">Q5JP53</a>
Synonyms:	4930542G03Rik; RP23-132N23.7; Tubb2; Tubb2c; Tubb2c1
Protein Families:	Druggable Genome
Protein Pathways:	Gap junction, Pathogenic Escherichia coli infection



[View online »](#)

**Product images:**

Host: Rabbit  
Target Name: TUBB2C  
Sample Type: RPMI 8226 Cell Lysate  
Antibody Dilution: 1.0 $\mu$ g/ml

Host: Rabbit  
Target Name: TUBB2C  
Sample Tissue: Human RPMI 8226 Whole Cell lysates  
Antibody Dilution: 1  $\mu$ g/ml