

Product datasheet for **TA360782**

POGLUT2 Rabbit Polyclonal Antibody

Product data:

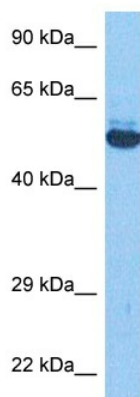
Product Type:	Primary Antibodies
Applications:	WB
Reactivity:	Human
Host:	Rabbit
Clonality:	Polyclonal
Immunogen:	The immunogen is a synthetic peptide directed towards the middle region of human KDELC1
Specificity:	Expected reactivity: Human
Formulation:	Liquid. Purified antibody supplied in 1x PBS buffer with 0.09% (w/v) sodium azide and 2% sucrose.
Concentration:	lot specific
Purification:	Affinity purified
Conjugation:	Unconjugated
Storage:	For short term use, store at 2-8°C up to 1 week. For long term storage, store at -20°C in small aliquots to prevent freeze-thaw cycles.
Stability:	Shelf life: one year from despatch.
Predicted Protein Size:	55 kDa
Gene Name:	KDEL motif containing 1
Database Link:	NP_076994.2 Entrez Gene 79070 Human Q6UW63
Background:	This gene encodes a protein product localized to the lumen of the endoplasmic reticulum. As a member of the endoplasmic reticulum protein family the encoded protein contains a Lys-Asp-Glu-Leu or KDEL motif located at the extreme C-terminus which prevents all endoplasmic reticulum resident proteins from being secreted. Proteins carrying this motif are bound by a receptor in the Golgi apparatus so that the receptor-ligand complex returns to the endoplasmic reticulum. A processed non-transcribed pseudogene located in an intron of a sodium transporter gene on chromosome 5 has been defined for this gene. This gene has multiple transcript variants which are predicted to encode distinct isoforms.



[View online »](#)

Synonyms: EP58; KDELC1; MGC5302

Product images:



Host: Rabbit
Target Name: KDELC1
Sample Type: HepG2 Cell Lysate
Antibody Dilution: 1.0 μ g/ml

Host: Rabbit
Target Name: KDELC1
Sample Tissue: Human HepG2 Whole Cell lysates
Antibody Dilution: 1 μ g/ml