

## Product datasheet for **TA360779**

### **RAB3GAP1 Rabbit Polyclonal Antibody**

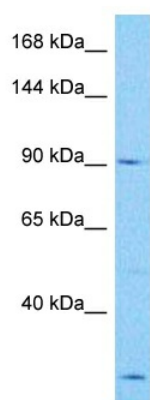
#### **Product data:**

Product Type:	Primary Antibodies
Applications:	WB
Reactivity:	Human
Host:	Rabbit
Clonality:	Polyclonal
Immunogen:	The immunogen is a synthetic peptide directed towards the middle region of human RAB3GAP1
Specificity:	<b>Expected reactivity:</b> Human
Formulation:	Liquid. Purified antibody supplied in 1x PBS buffer with 0.09% (w/v) sodium azide and 2% sucrose. <i>Note that this product is shipped as lyophilized powder to China customers.</i>
Concentration:	lot specific
Purification:	Affinity purified
Conjugation:	Unconjugated
Storage:	For short term use, store at 2-8°C up to 1 week. For long term storage, store at -20°C in small aliquots to prevent freeze-thaw cycles.
Stability:	Shelf life: one year from despatch.
Predicted Protein Size:	96 kDa
Gene Name:	RAB3 GTPase activating protein catalytic subunit 1
Database Link:	<a href="#">NP_001165906.1</a> <a href="#">Entrez Gene 22930 Human D3DP75</a>
Background:	This gene encodes the catalytic subunit of a Rab GTPase activating protein. The encoded protein forms a heterodimer with a non-catalytic subunit to specifically regulate the activity of members of the Rab3 subfamily of small G proteins. This protein mediates the hydrolysis of GTP bound Rab3 to the GDP bound form. Mutations in this gene are associated with Warburg micro syndrome. Alternate splicing results in multiple transcript variants.
Synonyms:	DKFZp434A012; KIAA0066; P130; Rab3-GAP; RAB3GAP; RAB3GAP130; WARBM1



[View online »](#)

## Product images:



Host: Rabbit  
Target Name: RAB3GAP1  
Sample Type: NCI-H226 Cell Lysate  
Antibody Dilution: 1.0 $\mu$ g/ml

Host: Rabbit  
Target Name: RAB3GAP1  
Sample Tissue: Human NCI-H226 Whole Cell lysates  
Antibody Dilution: 1  $\mu$ g/ml