

## Product datasheet for **TA360773**

### **BOD1 Rabbit Polyclonal Antibody**

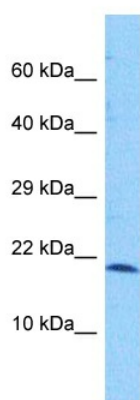
#### **Product data:**

Product Type:	Primary Antibodies
Applications:	WB
Reactivity:	Human
Host:	Rabbit
Clonality:	Polyclonal
Immunogen:	The immunogen is a synthetic peptide directed towards the middle region of human BOD1
Specificity:	<b>Expected reactivity:</b> Human
Formulation:	Liquid. Purified antibody supplied in 1x PBS buffer with 0.09% (w/v) sodium azide and 2% sucrose. <i>Note that this product is shipped as lyophilized powder to China customers.</i>
Concentration:	lot specific
Purification:	Affinity purified
Conjugation:	Unconjugated
Storage:	For short term use, store at 2-8°C up to 1 week. For long term storage, store at -20°C in small aliquots to prevent freeze-thaw cycles.
Stability:	Shelf life: one year from despatch.
Predicted Protein Size:	20 kDa
Gene Name:	biorientation of chromosomes in cell division 1
Database Link:	<a href="#">NP_001153123.1</a> <a href="#">Entrez Gene 91272 Human</a> <a href="#">Q96IK1</a>
Synonyms:	FAM44B



[View online »](#)

## Product images:



Host: Rabbit  
 Target Name: BOD1  
 Sample Type: Stomach Tumort Lysate  
 Antibody Dilution: 1.0µg/ml

Host: Rabbit  
 Target Name: BOD1  
 Sample Tissue: Human Stomach Tumor lysates  
 Antibody Dilution: 1ug/ml