

Product datasheet for **TA360769**

SLC39A13 Rabbit Polyclonal Antibody

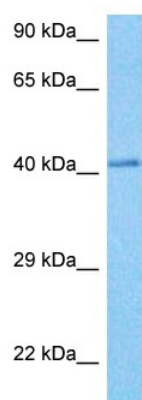
Product data:

Product Type:	Primary Antibodies
Applications:	WB
Reactivity:	Human
Host:	Rabbit
Clonality:	Polyclonal
Immunogen:	The immunogen is a synthetic peptide directed towards the middle region of human SLC39A13
Specificity:	Expected reactivity: Human
Formulation:	Liquid. Purified antibody supplied in 1x PBS buffer with 0.09% (w/v) sodium azide and 2% sucrose.
Concentration:	lot specific
Purification:	Affinity purified
Conjugation:	Unconjugated
Storage:	For short term use, store at 2-8°C up to 1 week. For long term storage, store at -20°C in small aliquots to prevent freeze-thaw cycles.
Stability:	Shelf life: one year from despatch.
Predicted Protein Size:	40 kDa
Gene Name:	solute carrier family 39 member 13
Database Link:	NP_001121697.1 Entrez Gene 91252 Human Q96H72-2
Background:	This gene encodes a member of the LIV-1 subfamily of the ZIP transporter family. The encoded transmembrane protein functions as a zinc transporter. Mutations in this gene have been associated with the spondylocheiro dysplastic form of Ehlers-Danlos syndrome. Alternate transcript variants have been found for this gene.
Synonyms:	FLJ25785; LZT-Hs9; ZIP-13; ZIP13
Protein Families:	Transmembrane



[View online »](#)

Product images:



Host: Rabbit
Target Name: SLC39A13
Sample Type: U937 Cell Lysate
Antibody Dilution: 1.0µg/ml

Host: Rabbit
Target Name: SLC39A13
Sample Tissue: Human U937 Whole Cell lysates
Antibody Dilution: 1ug/ml