

Product datasheet for **TA360764**

MMP12 Rabbit Polyclonal Antibody

Product data:

Product Type:	Primary Antibodies
Applications:	WB
Reactivity:	Human
Host:	Rabbit
Clonality:	Polyclonal
Immunogen:	The immunogen is a synthetic peptide directed towards the middle region of human MMP12
Specificity:	Expected reactivity: Human
Formulation:	Liquid. Purified antibody supplied in 1x PBS buffer with 0.09% (w/v) sodium azide and 2% sucrose. <i>Note that this product is shipped as lyophilized powder to China customers.</i>
Concentration:	lot specific
Purification:	Affinity purified
Conjugation:	Unconjugated
Storage:	For short term use, store at 2-8°C up to 1 week. For long term storage, store at -20°C in small aliquots to prevent freeze-thaw cycles.
Stability:	Shelf life: one year from despatch.
Predicted Protein Size:	51 kDa
Gene Name:	matrix metalloproteinase 12
Database Link:	NP_002417.2 Entrez Gene 4321 Human P39900



[View online »](#)

Background:

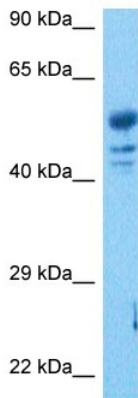
This gene encodes a member of the peptidase M10 family of matrix metalloproteinases (MMPs). Proteins in this family are involved in the breakdown of extracellular matrix in normal physiological processes, such as embryonic development, reproduction, and tissue remodeling, as well as in disease processes, such as arthritis and metastasis. The encoded preproprotein is proteolytically processed to generate the mature protease. This protease degrades soluble and insoluble elastin. This gene may play a role in aneurysm formation and mutations in this gene are associated with lung function and chronic obstructive pulmonary disease (COPD). This gene is part of a cluster of MMP genes on chromosome 11.

Synonyms:

HME; ME; MGC138506; MME; MMP-12

Protein Families:

Druggable Genome, Protease

Product images:


Host: Rabbit
 Target Name: MMP12
 Sample Type: Ovary Tumor Lysate
 Antibody Dilution: 1.0µg/ml

Host: Rabbit
 Target Name: MMP12
 Sample Tissue: Human Ovary Tumor lysates
 Antibody Dilution: 1ug/ml