

## Product datasheet for **TA360763**

### Spindly (SPDL1) Rabbit Polyclonal Antibody

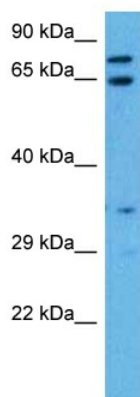
#### Product data:

Product Type:	Primary Antibodies
Applications:	WB
Reactivity:	Human
Host:	Rabbit
Clonality:	Polyclonal
Immunogen:	The immunogen is a synthetic peptide directed towards the middle terminal region of human CCDC99
Specificity:	<b>Expected reactivity:</b> Human
Formulation:	Liquid. Purified antibody supplied in 1x PBS buffer with 0.09% (w/v) sodium azide and 2% sucrose. <i>Note that this product is shipped as lyophilized powder to China customers.</i>
Concentration:	lot specific
Purification:	Affinity purified
Conjugation:	Unconjugated
Storage:	For short term use, store at 2-8°C up to 1 week. For long term storage, store at -20°C in small aliquots to prevent freeze-thaw cycles.
Stability:	Shelf life: one year from despatch.
Predicted Protein Size:	66 kDa
Gene Name:	spindle apparatus coiled-coil protein 1
Database Link:	<a href="#">NP_060255.3</a> <a href="#">Entrez Gene 54908 Human</a> <a href="#">Q96EA4</a>
Background:	This gene encodes a coiled-coil domain-containing protein that functions in mitotic spindle formation and chromosome segregation. The encoded protein plays a role in coordinating microtubule attachment by promoting recruitment of dynein proteins, and in mitotic checkpoint signaling.
Synonyms:	1700018I02Rik; 2600001J17Rik; 2810049B11Rik; AA409762; Ccdc99; RGD1306908



[View online »](#)

## Product images:



Host: Rabbit  
Target Name: CCDC99  
Sample Type: DLD1 Cell Lysate  
Antibody Dilution: 1.0µg/ml

Host: Rabbit  
Target Name: CCDC99  
Sample Tissue: Human DLD1 Whole Cell lysates  
Antibody Dilution: 1ug/ml