

## Product datasheet for **TA360754**

### NYX Rabbit Polyclonal Antibody

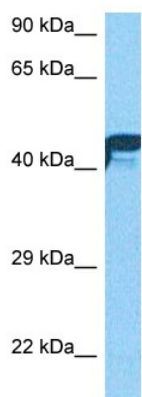
#### Product data:

Product Type:	Primary Antibodies
Applications:	WB
Reactivity:	Human
Host:	Rabbit
Clonality:	Polyclonal
Immunogen:	The immunogen is a synthetic peptide directed towards the middle region of human NYX
Specificity:	<b>Expected reactivity:</b> Human
Formulation:	Liquid. Purified antibody supplied in 1x PBS buffer with 0.09% (w/v) sodium azide and 2% sucrose.
Concentration:	lot specific
Purification:	Affinity purified
Conjugation:	Unconjugated
Storage:	For short term use, store at 2-8°C up to 1 week. For long term storage, store at -20°C in small aliquots to prevent freeze-thaw cycles.
Stability:	Shelf life: one year from despatch.
Predicted Protein Size:	52 kDa
Gene Name:	nyctalopin
Database Link:	<a href="#">NP_072089.1</a> <a href="#">Entrez Gene 60506 Human</a> <a href="#">Q9GZU5</a>
Background:	The product of this gene belongs to the small leucine-rich proteoglycan (SLRP) family of proteins. Defects in this gene are the cause of congenital stationary night blindness type 1 (CSNB1), also called X-linked congenital stationary night blindness (XLCSNB). CSNB1 is a rare inherited retinal disorder characterized by impaired scotopic vision, myopia, hyperopia, nystagmus and reduced visual acuity. The role of other SLRP proteins suggests that mutations in this gene disrupt developing retinal interconnections involving the ON-bipolar cells, leading to the visual losses seen in patients with complete CSNB.
Synonyms:	CLRP; CSNB1; CSNB4; MGC138447; nyctalopin; OTTHUMP00000023146



[View online »](#)

Protein Families: Secreted Protein, Transmembrane

**Product images:**

Host: Rabbit  
Target Name: NYX  
Sample Type: DLD1 Cell Lysate  
Antibody Dilution: 1.0µg/ml

Host: Rabbit  
Target Name: NYX  
Sample Tissue: Human DLD1 Whole Cell lysates  
Antibody Dilution: 1ug/ml