

## Product datasheet for **TA360752**

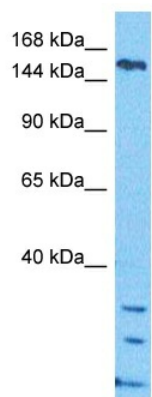
### ARHGEF10L Rabbit Polyclonal Antibody

#### Product data:

Product Type:	Primary Antibodies
Applications:	WB
Reactivity:	Human
Host:	Rabbit
Clonality:	Polyclonal
Immunogen:	The immunogen is a synthetic peptide directed towards the N terminal region of human ARHGEF10L
Specificity:	<b>Expected reactivity:</b> Human
Formulation:	Liquid. Purified antibody supplied in 1x PBS buffer with 0.09% (w/v) sodium azide and 2% sucrose. <i>Note that this product is shipped as lyophilized powder to China customers.</i>
Concentration:	lot specific
Purification:	Affinity purified
Conjugation:	Unconjugated
Storage:	For short term use, store at 2-8°C up to 1 week. For long term storage, store at -20°C in small aliquots to prevent freeze-thaw cycles.
Stability:	Shelf life: one year from despatch.
Predicted Protein Size:	141 kDa
Gene Name:	Rho guanine nucleotide exchange factor 10 like
Database Link:	<a href="#">NP_001011722.2</a> <a href="#">Entrez Gene 55160 Human</a> <a href="#">Q9HCE6</a>
Background:	ARHGEF10L is a member of the RhoGEF family of guanine nucleotide exchange factors (GEFs) that activate Rho GTPases (Winkler et al., 2005 [PubMed 16112081]).[supplied by OMIM, Dec 2008]
Synonyms:	FLJ10521; GRINCHGEF; KIAA1626; OTTHUMP00000002617; RP11-473A10.1



[View online »](#)

**Product images:**

Host: Rabbit  
Target Name: ARHGEF10L  
Sample Type: 293T Cell Lysate  
Antibody Dilution: 1.0 $\mu$ g/ml

Host: Rabbit  
Target Name: ARHGEF10L  
Sample Tissue: 293T Whole Cell lysates  
Antibody Dilution: 1  $\mu$ g/ml