

Product datasheet for **TA360751**

ARHGAP18 Rabbit Polyclonal Antibody

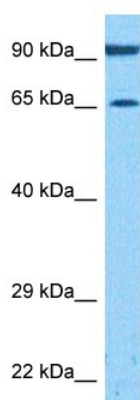
Product data:

Product Type:	Primary Antibodies
Applications:	WB
Reactivity:	Human
Host:	Rabbit
Clonality:	Polyclonal
Immunogen:	The immunogen is a synthetic peptide directed towards the middle region of human ARHGAP18
Specificity:	Expected reactivity: Human
Formulation:	Liquid. Purified antibody supplied in 1x PBS buffer with 0.09% (w/v) sodium azide and 2% sucrose.
Concentration:	lot specific
Purification:	Affinity purified
Conjugation:	Unconjugated
Storage:	For short term use, store at 2-8°C up to 1 week. For long term storage, store at -20°C in small aliquots to prevent freeze-thaw cycles.
Stability:	Shelf life: one year from despatch.
Predicted Protein Size:	67 kDa
Gene Name:	Rho GTPase activating protein 18
Database Link:	NP_277050.2 Entrez Gene 93663 Human Q8N392-2
Background:	ARHGAP18 belongs to a family of Rho (see MIM 165390) GTPase-activating proteins that modulate cell signaling (Potkin et al., 2009 [PubMed 19065146]).[supplied by OMIM, Apr 2010]
Synonyms:	bA307O14.2; FLJ25728; MacGAP; MGC126757; MGC138145



[View online »](#)

Product images:



Host: Rabbit
Target Name: ARHGAP18
Sample Type: HTP-1 Cell Lysate
Antibody Dilution: 1.0 μ g/ml

Host: Rabbit
Target Name: ARHGAP18
Sample Tissue: Human THP-1 Whole Cell lysates
Antibody Dilution: 1 μ g/ml