

## Product datasheet for **TA360749**

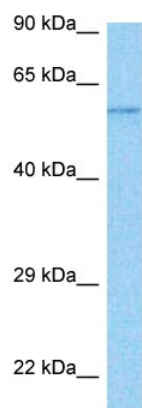
### TSTD2 Rabbit Polyclonal Antibody

#### Product data:

Product Type:	Primary Antibodies
Applications:	WB
Reactivity:	Human
Host:	Rabbit
Clonality:	Polyclonal
Immunogen:	The immunogen is a synthetic peptide directed towards the N terminal region of human TSTD2
Specificity:	<b>Expected reactivity:</b> Human
Formulation:	Liquid. Purified antibody supplied in 1x PBS buffer with 0.09% (w/v) sodium azide and 2% sucrose.
Concentration:	lot specific
Purification:	Affinity purified
Conjugation:	Unconjugated
Storage:	For short term use, store at 2-8°C up to 1 week. For long term storage, store at -20°C in small aliquots to prevent freeze-thaw cycles.
Stability:	Shelf life: one year from despatch.
Predicted Protein Size:	56 kDa
Gene Name:	thiosulfate sulfurtransferase like domain containing 2
Database Link:	<a href="#">NP_640339.4</a> <a href="#">Entrez Gene 158427 Human</a> <a href="#">Q5T7W7</a>
Synonyms:	C9orf97; RP11-244N9.5
Protein Families:	Druggable Genome



[View online »](#)

**Product images:**


Host: Rabbit  
 Target Name: TSTD2  
 Sample Type: Stomach Tumor Lysate  
 Antibody Dilution: 1.0µg/ml

Host: Rabbit  
 Target Name: TSTD2  
 Sample Tissue: Stomach Tumor lysates  
 Antibody Dilution: 1ug/ml