

## Product datasheet for **TA360747**

### TUBA3D Rabbit Polyclonal Antibody

#### Product data:

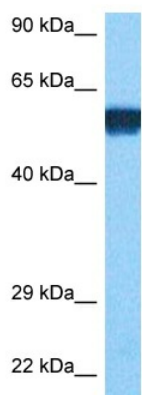
Product Type:	Primary Antibodies
Applications:	WB
Reactivity:	Human
Host:	Rabbit
Clonality:	Polyclonal
Immunogen:	The immunogen is a synthetic peptide directed towards the N terminal region of human TUBA3D
Specificity:	<b>Expected reactivity:</b> Human
Formulation:	Liquid. Purified antibody supplied in 1x PBS buffer with 0.09% (w/v) sodium azide and 2% sucrose. <i>Note that this product is shipped as lyophilized powder to China customers.</i>
Concentration:	lot specific
Purification:	Affinity purified
Conjugation:	Unconjugated
Storage:	For short term use, store at 2-8°C up to 1 week. For long term storage, store at -20°C in small aliquots to prevent freeze-thaw cycles.
Stability:	Shelf life: one year from despatch.
Predicted Protein Size:	50 kDa
Gene Name:	tubulin alpha 3d
Database Link:	<a href="#">NP_005992.1</a> <a href="#">Entrez Gene 7278 Human</a> <a href="#">Entrez Gene 113457 Human</a> <a href="#">Q13748</a>
Background:	This gene encodes a member of the alpha tubulin family. Tubulin is a major component of microtubules, which are composed of alpha- and beta-tubulin heterodimers and microtubule-associated proteins in the cytoskeleton. Microtubules maintain cellular structure, function in intracellular transport, and play a role in spindle formation during mitosis.
Synonyms:	H2-ALPHA; TUBA2
Protein Families:	Druggable Genome, Stem cell - Pluripotency



[View online »](#)

Protein Pathways: Gap junction, Pathogenic Escherichia coli infection

### Product images:



Host: Rabbit  
Target Name: TUBA3C  
Sample Type: DLD1 Cell Lysate  
Antibody Dilution: 1.0 $\mu$ g/ml

Host: Rabbit  
Target Name: TUBA3C  
Sample Tissue: DLD1 Whole Cell lysates  
Antibody Dilution: 1 $\mu$ g/ml