

Product datasheet for **TA360741**

Ellis van Creveld syndrome (EVC) Rabbit Polyclonal Antibody

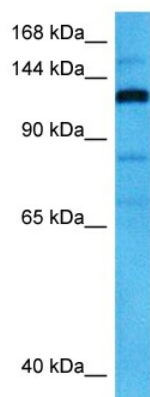
Product data:

Product Type:	Primary Antibodies
Applications:	WB
Reactivity:	Human
Host:	Rabbit
Clonality:	Polyclonal
Immunogen:	The immunogen is a synthetic peptide directed towards the N terminal region of human EVC
Specificity:	Expected reactivity: Human
Formulation:	Liquid. Purified antibody supplied in 1x PBS buffer with 0.09% (w/v) sodium azide and 2% sucrose.
Concentration:	lot specific
Purification:	Affinity purified
Conjugation:	Unconjugated
Storage:	For short term use, store at 2-8°C up to 1 week. For long term storage, store at -20°C in small aliquots to prevent freeze-thaw cycles.
Stability:	Shelf life: one year from despatch.
Predicted Protein Size:	112 kDa
Gene Name:	EvC ciliary complex subunit 1
Database Link:	NP_001293019.1 Entrez Gene 2121 Human P57679
Background:	This gene encodes a protein containing a leucine zipper and a transmembrane domain. This gene has been implicated in both Ellis-van Creveld syndrome (EvC) and Weyers acrocardial dysostosis.
Synonyms:	DWF-1; EVC1; EVCL; MGC105107



[View online »](#)

Product images:



Host: Rabbit
Target Name: EVC
Sample Type: OVCAR-3 Cell Lysate
Antibody Dilution: 1.0 μ g/ml

Host: Rabbit
Target Name: EVC
Sample Tissue: Human OVCAR-3 Whole Cell lysates
Antibody Dilution: 1 μ g/ml