

Product datasheet for **TA360732**

SHISA2 Rabbit Polyclonal Antibody

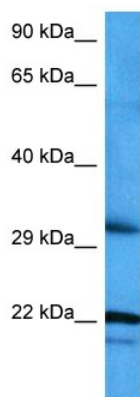
Product data:

Product Type:	Primary Antibodies
Applications:	WB
Reactivity:	Human
Host:	Rabbit
Clonality:	Polyclonal
Immunogen:	The immunogen is a synthetic peptide directed towards the middle region of human SHISA2
Specificity:	Expected reactivity: Human
Formulation:	Liquid. Purified antibody supplied in 1x PBS buffer with 0.09% (w/v) sodium azide and 2% sucrose.
Concentration:	lot specific
Purification:	Affinity purified
Conjugation:	Unconjugated
Storage:	For short term use, store at 2-8°C up to 1 week. For long term storage, store at -20°C in small aliquots to prevent freeze-thaw cycles.
Stability:	Shelf life: one year from despatch.
Predicted Protein Size:	32 kDa
Gene Name:	shisa family member 2
Database Link:	NP_001007539.1 Entrez Gene 387914 Human Q6UWI4
Synonyms:	bA398O19.2; C13orf13; hShisa; PRO28631; TMEM46; WGAR9166
Protein Families:	Transmembrane



[View online »](#)

Product images:



Host: Rabbit
Target Name: SHISA2
Sample Type: HCT116 Cell Lysate
Antibody Dilution: 1.0µg/ml

Host: Rabbit
Target Name: SHISA2
Sample Tissue: HCT116 Whole Cell lysates
Antibody Dilution: 1.0ug/ml