

Product datasheet for **TA360726**

ADCY4 Rabbit Polyclonal Antibody

Product data:

Product Type:	Primary Antibodies
Applications:	WB
Reactivity:	Human
Host:	Rabbit
Clonality:	Polyclonal
Immunogen:	The immunogen is a synthetic peptide directed towards the middle region of human ADCY4
Specificity:	Expected reactivity: Human
Formulation:	Liquid. Purified antibody supplied in 1x PBS buffer with 0.09% (w/v) sodium azide and 2% sucrose. <i>Note that this product is shipped as lyophilized powder to China customers.</i>
Concentration:	lot specific
Purification:	Affinity purified
Conjugation:	Unconjugated
Storage:	For short term use, store at 2-8°C up to 1 week. For long term storage, store at -20°C in small aliquots to prevent freeze-thaw cycles.
Stability:	Shelf life: one year from despatch.
Predicted Protein Size:	83 kDa
Gene Name:	adenylate cyclase 4
Database Link:	NP_001185497.1 Entrez Gene 196883 Human B4DSJ6
Background:	This gene encodes a member of the family of adenylate cyclases, which are membrane-associated enzymes that catalyze the formation of the secondary messenger cyclic adenosine monophosphate (cAMP). Mouse studies show that adenylate cyclase 4, along with adenylate cyclases 2 and 3, is expressed in olfactory cilia, suggesting that several different adenylate cyclases may couple to olfactory receptors and that there may be multiple receptor-mediated mechanisms for the generation of cAMP signals. Alternative splicing results in transcript variants.



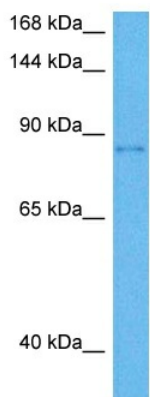
[View online »](#)

Synonyms: AC4; OTTHUMP00000164788

Protein Families: Druggable Genome, Transmembrane

Protein Pathways: Calcium signaling pathway, Chemokine signaling pathway, Dilated cardiomyopathy, Gap junction, GnRH signaling pathway, Melanogenesis, Oocyte meiosis, Progesterone-mediated oocyte maturation, Purine metabolism, Taste transduction, Vascular smooth muscle contraction

Product images:



Host: Rabbit
 Target Name: ADCY4
 Sample Type: Mesenchymoma Tumor Lysate
 Antibody Dilution: 1.0µg/ml

Host: Rabbit
 Target Name: ADCY4
 Sample Tissue: Human Mesenchymoma Tumor lysates
 Antibody Dilution: 1ug/ml