

## Product datasheet for **TA360711**

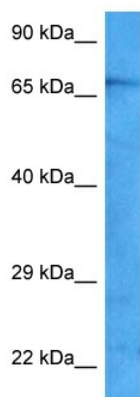
### **RAB11FIP4 Rabbit Polyclonal Antibody**

#### **Product data:**

Product Type:	Primary Antibodies
Applications:	WB
Reactivity:	Human
Host:	Rabbit
Clonality:	Polyclonal
Immunogen:	The immunogen is a synthetic peptide directed towards the C terminal region of human RAB11FIP4
Specificity:	<b>Expected reactivity:</b> Human
Formulation:	Liquid. Purified antibody supplied in 1x PBS buffer with 0.09% (w/v) sodium azide and 2% sucrose. <i>Note that this product is shipped as lyophilized powder to China customers.</i>
Concentration:	lot specific
Purification:	Affinity purified
Conjugation:	Unconjugated
Storage:	For short term use, store at 2-8°C up to 1 week. For long term storage, store at -20°C in small aliquots to prevent freeze-thaw cycles.
Stability:	Shelf life: one year from despatch.
Predicted Protein Size:	70 kDa
Gene Name:	RAB11 family interacting protein 4
Database Link:	<a href="#">NP_001290471.2</a> <a href="#">Entrez Gene 84440 Human</a> <a href="#">Q86YS3</a>
Background:	Proteins of the large Rab GTPase family (see RAB1A; MIM 179508) have regulatory roles in the formation, targeting, and fusion of intracellular transport vesicles. RAB11FIP4 is one of many proteins that interact with and regulate Rab GTPases (Hales et al., 2001 [PubMed 11495908]). [supplied by OMIM, Apr 2008]
Synonyms:	FLJ00131; KIAA1821; MGC11316; MGC126566; Rab11-FIP4



[View online >](#)

**Product images:**

Host: Rabbit  
Target Name: RAB11FIP4  
Sample Type: HT1080 Cell Lysate  
Antibody Dilution: 1.0 $\mu$ g/ml

Host: Rabbit  
Target Name: RAB11FIP4  
Sample Tissue: HT1080 Whole Cell lysates  
Antibody Dilution: 1.0 $\mu$ g/ml