

Product datasheet for **TA360710**

M Cadherin (CDH15) Rabbit Polyclonal Antibody

Product data:

Product Type:	Primary Antibodies
Applications:	WB
Reactivity:	Human
Host:	Rabbit
Clonality:	Polyclonal
Immunogen:	The immunogen is a synthetic peptide directed towards the middle region of human CDH15
Specificity:	Expected reactivity: Human
Formulation:	Liquid. Purified antibody supplied in 1x PBS buffer with 0.09% (w/v) sodium azide and 2% sucrose. <i>Note that this product is shipped as lyophilized powder to China customers.</i>
Concentration:	lot specific
Purification:	Affinity purified
Conjugation:	Unconjugated
Storage:	For short term use, store at 2-8°C up to 1 week. For long term storage, store at -20°C in small aliquots to prevent freeze-thaw cycles.
Stability:	Shelf life: one year from despatch.
Predicted Protein Size:	90 kDa
Gene Name:	cadherin 15
Database Link:	NP_004924.1 Entrez Gene 1013 Human P55291
Background:	This gene is a member of the cadherin superfamily of genes, encoding calcium-dependent intercellular adhesion glycoproteins. Cadherins consist of an extracellular domain containing 5 cadherin domains, a transmembrane region, and a conserved cytoplasmic domain. Transcripts from this particular cadherin are expressed in myoblasts and upregulated in myotubule-forming cells. The protein is thought to be essential for the control of morphogenetic processes, specifically myogenesis, and may provide a trigger for terminal muscle cell differentiation.



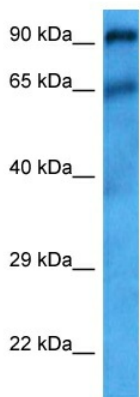
[View online »](#)

Synonyms: cadherin-3; Cadherin-14; CDH3; CDH14; CDHM; M-cadherin; MCAD; MRD3; muscle-cadherin

Protein Families: Transmembrane

Protein Pathways: Cell adhesion molecules (CAMs)

Product images:



Host: Rabbit
 Target Name: CDH15
 Sample Type: RPMI 8226 Cell Lysate
 Antibody Dilution: 1.0µg/ml

Host: Rabbit
 Target Name: CDH15
 Sample Tissue: RPMI 8226 Whole Cell lysates
 Antibody Dilution: 1.0ug/ml