

Product datasheet for **TA360706**

FARP1 Rabbit Polyclonal Antibody

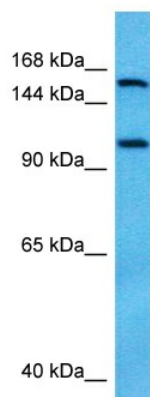
Product data:

Product Type:	Primary Antibodies
Applications:	WB
Reactivity:	Human
Host:	Rabbit
Clonality:	Polyclonal
Immunogen:	The immunogen is a synthetic peptide directed towards the middle region of human FARP1
Specificity:	Expected reactivity: Human
Formulation:	Liquid. Purified antibody supplied in 1x PBS buffer with 0.09% (w/v) sodium azide and 2% sucrose. <i>Note that this product is shipped as lyophilized powder to China customers.</i>
Concentration:	lot specific
Purification:	Affinity purified
Conjugation:	Unconjugated
Storage:	For short term use, store at 2-8°C up to 1 week. For long term storage, store at -20°C in small aliquots to prevent freeze-thaw cycles.
Stability:	Shelf life: one year from despatch.
Predicted Protein Size:	119 kDa
Gene Name:	FERM, ARH/RhoGEF and pleckstrin domain protein 1
Database Link:	NP_001001715.2 Entrez Gene 10160 Human Q9Y4F1
Background:	This gene encodes a protein containing a FERM (4.2, exrin, radixin, moesin) domain, a Dbl homology domain, and two pleckstrin homology domains. These domains are found in guanine nucleotide exchange factors and proteins that link the cytoskeleton to the cell membrane. The encoded protein functions in neurons to promote dendritic growth. Alternative splicing results in multiple transcript variants.
Synonyms:	CDEP; MGC87400; PLEKHC2



[View online »](#)

Product images:



Host: Rabbit
Target Name: FARP1
Sample Type: NCI-H226 Cell Lysate
Antibody Dilution: 1.0 μ g/ml

Host: Rabbit
Target Name: FARP1
Sample Tissue: Human NCI-H226 Whole Cell lysates
Antibody Dilution: 1 μ g/ml