

## Product datasheet for **TA360693**

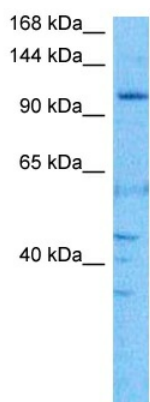
### **SNM1A (DCLRE1A) Rabbit Polyclonal Antibody**

#### **Product data:**

Product Type:	Primary Antibodies
Applications:	WB
Reactivity:	Human
Host:	Rabbit
Clonality:	Polyclonal
Immunogen:	The immunogen is a synthetic peptide directed towards the N terminal region of human DCLRE1A
Specificity:	<b>Expected reactivity:</b> Human
Formulation:	Liquid. Purified antibody supplied in 1x PBS buffer with 0.09% (w/v) sodium azide and 2% sucrose. <i>Note that this product is shipped as lyophilized powder to China customers.</i>
Concentration:	lot specific
Purification:	Affinity purified
Conjugation:	Unconjugated
Storage:	For short term use, store at 2-8°C up to 1 week. For long term storage, store at -20°C in small aliquots to prevent freeze-thaw cycles.
Stability:	Shelf life: one year from despatch.
Predicted Protein Size:	114 kDa
Gene Name:	DNA cross-link repair 1A
Database Link:	<a href="#">NP_001258745.1</a> <a href="#">Entrez Gene 9937 Human</a> <a href="#">Q6PJP8</a>
Background:	This gene encodes a conserved protein that is involved in the repair of DNA interstrand cross-links. DNA cross-links suppress transcription, replication, and DNA segregation. The encoded protein is a regulator of the mitotic cell cycle checkpoint. Alternative splicing results in multiple transcript variants.
Synonyms:	hSNM1; hSNM1A; KIAA0086; OTTHUMP00000020516; PSO2; SNM1; SNM1A
Protein Families:	Druggable Genome



[View online »](#)

**Product images:**

Host: Rabbit  
Target Name: DCLRE1A  
Sample Type: DLD1 Cell Lysate  
Antibody Dilution: 1.0 $\mu$ g/ml

Host: Rabbit  
Target Name: DCLRE1A  
Sample Tissue: DLD1 Whole Cell lysates  
Antibody Dilution: 1.0ug/ml