

Product datasheet for **TA360691**

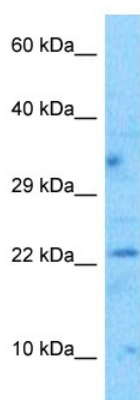
MAP6D1 Rabbit Polyclonal Antibody

Product data:

Product Type:	Primary Antibodies
Applications:	WB
Reactivity:	Human
Host:	Rabbit
Clonality:	Polyclonal
Immunogen:	The immunogen is a synthetic peptide directed towards the middle region of human MAP6D1
Specificity:	Expected reactivity: Human
Formulation:	Liquid. Purified antibody supplied in 1x PBS buffer with 0.09% (w/v) sodium azide and 2% sucrose.
Concentration:	lot specific
Purification:	Affinity purified
Conjugation:	Unconjugated
Storage:	For short term use, store at 2-8°C up to 1 week. For long term storage, store at -20°C in small aliquots to prevent freeze-thaw cycles.
Stability:	Shelf life: one year from despatch.
Predicted Protein Size:	21 kDa
Gene Name:	MAP6 domain containing 1
Database Link:	NP_079147.1 Entrez Gene 79929 Human Q9H9H5
Background:	This gene encodes a protein highly similar to the mouse MAP6 domain containing 1 protein, which is related to the STOP proteins. Based on the study of the mouse protein, the encoded protein may function as a calmodulin-regulated neuronal protein that binds and stabilizes microtubules but also associates with the Golgi membranes through N-terminal palmitoylation.
Synonyms:	FLJ12748; MAPO6D1; SL21



[View online »](#)

Product images:


Host: Rabbit
 Target Name: CPA4
 Sample Type: HCT15 Cell Lysate
 Antibody Dilution: 1.0µg/ml

Host: Rabbit
 Target Name: MAP6D1
 Sample Tissue: Human HCT15 Whole Cell lysates
 Antibody Dilution: 1ug/ml