

Product datasheet for **TA360673**

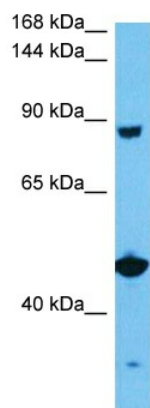
SNX19 Rabbit Polyclonal Antibody

Product data:

Product Type:	Primary Antibodies
Applications:	WB
Reactivity:	Human
Host:	Rabbit
Clonality:	Polyclonal
Immunogen:	The immunogen is a synthetic peptide directed towards the middle region of human SNX19
Specificity:	Expected reactivity: Human
Formulation:	Liquid. Purified antibody supplied in 1x PBS buffer with 0.09% (w/v) sodium azide and 2% sucrose.
Concentration:	lot specific
Purification:	Affinity purified
Conjugation:	Unconjugated
Storage:	For short term use, store at 2-8°C up to 1 week. For long term storage, store at -20°C in small aliquots to prevent freeze-thaw cycles.
Stability:	Shelf life: one year from despatch.
Predicted Protein Size:	88 kDa
Gene Name:	sorting nexin 19
Database Link:	NP_055573.2 Entrez Gene 399979 Human Q92543-2
Background:	Islet antigen-2 (IA-2) is an autoantigen in type 1 diabetes and plays a role in insulin secretion. IA-2 is found in dense-core secretory vesicles and interacts with the product of this gene, a sorting nexin. In mouse pancreatic beta-cells, the encoded protein influenced insulin secretion by stabilizing the number of dense-core secretory vesicles.
Synonyms:	CHET8; DKFZp6671205; KIAA0254
Protein Families:	Transmembrane



[View online »](#)

Product images:

Host: Rabbit
Target Name: SNX19
Sample Type: DLD1 Cell Lysate
Antibody Dilution: 1.0 μ g/ml

Host: Rabbit
Target Name: SNX19
Sample Tissue: Human DLD1 Whole Cell lysates
Antibody Dilution: 1 μ g/ml