

## Product datasheet for **TA360668**

### SNRPD3 Rabbit Polyclonal Antibody

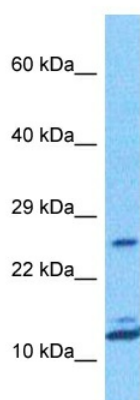
#### Product data:

Product Type:	Primary Antibodies
Applications:	WB
Reactivity:	Human
Host:	Rabbit
Clonality:	Polyclonal
Immunogen:	The immunogen is a synthetic peptide directed towards the middle region of human SNRPD3
Specificity:	<b>Expected reactivity:</b> Human
Formulation:	Liquid. Purified antibody supplied in 1x PBS buffer with 0.09% (w/v) sodium azide and 2% sucrose. <i>Note that this product is shipped as lyophilized powder to China customers.</i>
Concentration:	lot specific
Purification:	Affinity purified
Conjugation:	Unconjugated
Storage:	For short term use, store at 2-8°C up to 1 week. For long term storage, store at -20°C in small aliquots to prevent freeze-thaw cycles.
Stability:	Shelf life: one year from despatch.
Predicted Protein Size:	13 kDa
Gene Name:	small nuclear ribonucleoprotein D3 polypeptide
Database Link:	<a href="#">NP_001265585.1</a> <a href="#">Entrez Gene 6634 Human</a> <a href="#">P62318-2</a>
Background:	This gene encodes a core component of the spliceosome, which is a nuclear ribonucleoprotein complex that functions in pre-mRNA splicing. Alternative splicing results in multiple transcript variants.
Synonyms:	OTTHUMP00000198382; Sm-D3; SMD3
Protein Families:	Druggable Genome
Protein Pathways:	Spliceosome, Systemic lupus erythematosus



[View online »](#)

## Product images:



Host: Rabbit  
Target Name: SNRPD3  
Sample Type: Jurkat Cell Lysate  
Antibody Dilution: 1.0 $\mu$ g/ml

Host: Rabbit  
Target Name: SNRPD3  
Sample Tissue: Jurkat Whole Cell lysates  
Antibody Dilution: 1.0ug/ml