

## Product datasheet for **TA360667**

### SEC24A Rabbit Polyclonal Antibody

#### Product data:

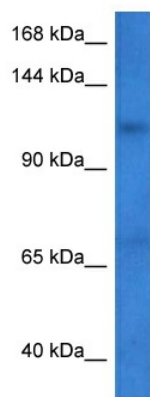
Product Type:	Primary Antibodies
Applications:	WB
Reactivity:	Human
Host:	Rabbit
Clonality:	Polyclonal
Immunogen:	The immunogen is a synthetic peptide directed towards the N terminal region of human SEC24A
Specificity:	<b>Expected reactivity:</b> Human
Formulation:	Liquid. Purified antibody supplied in 1x PBS buffer with 0.09% (w/v) sodium azide and 2% sucrose. <i>Note that this product is shipped as lyophilized powder to China customers.</i>
Concentration:	lot specific
Purification:	Affinity purified
Conjugation:	Unconjugated
Storage:	For short term use, store at 2-8°C up to 1 week. For long term storage, store at -20°C in small aliquots to prevent freeze-thaw cycles.
Stability:	Shelf life: one year from despatch.
Predicted Protein Size:	120 kDa
Gene Name:	SEC24 homolog A, COPII coat complex component
Database Link:	<a href="#">NP_001239160.1</a> <a href="#">Entrez Gene 10802 Human</a> <a href="#">O95486</a>
Background:	The protein encoded by this gene belongs to a family of proteins that are homologous to yeast Sec24. This protein is a component of coat protein II (COPII)-coated vesicles that mediate protein transport from the endoplasmic reticulum. COPII acts in the cytoplasm to promote the transport of secretory, plasma membrane, and vacuolar proteins from the endoplasmic reticulum to the golgi complex. Alternatively spliced transcript variants encoding different isoforms have been found for this gene.



[View online »](#)

Synonyms: SEC24A

### Product images:



Host: Rabbit  
Target Name: SEC24A  
Sample Type: NCI-H226 Cell Lysate  
Antibody Dilution: 1.0 $\mu$ g/ml

Host: Rabbit  
Target Name: SEC24A  
Sample Tissue: Human NCI-H226 Whole Cell lysates  
Antibody Dilution: 1 $\mu$ g/ml