

Product datasheet for **TA360656**

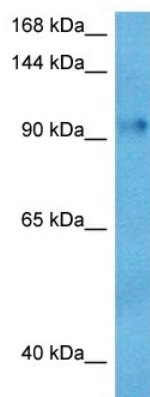
ALS2CR3 (TRAK2) Rabbit Polyclonal Antibody

Product data:

Product Type:	Primary Antibodies
Applications:	WB
Reactivity:	Human
Host:	Rabbit
Clonality:	Polyclonal
Immunogen:	The immunogen is a synthetic peptide directed towards the middle region of human TRAK2
Specificity:	Expected reactivity: Human
Formulation:	Liquid. Purified antibody supplied in 1x PBS buffer with 0.09% (w/v) sodium azide and 2% sucrose. <i>Note that this product is shipped as lyophilized powder to China customers.</i>
Concentration:	lot specific
Purification:	Affinity purified
Conjugation:	Unconjugated
Storage:	For short term use, store at 2-8°C up to 1 week. For long term storage, store at -20°C in small aliquots to prevent freeze-thaw cycles.
Stability:	Shelf life: one year from despatch.
Predicted Protein Size:	101 kDa
Gene Name:	trafficking kinesin protein 2
Database Link:	NP_055864.2 Entrez Gene 66008 Human O60296
Background:	May regulate endosome-to-lysosome trafficking of membrane cargo, including EGFR.
Synonyms:	ALS2CR3; CALS-C; GRIF-1; GRIF1; KIAA0549; OIP98
Protein Families:	Druggable Genome



[View online »](#)

Product images:

Host: Rabbit
Target Name: TRAK2
Sample Type: THP-1 Cell Lysate
Antibody Dilution: 1.0 μ g/ml

Host: Rabbit
Target Name: TRAK2
Sample Tissue: Human THP-1 Whole Cell lysates
Antibody Dilution: 1 μ g/ml