

Product datasheet for **TA360647**

TUBB1 Rabbit Polyclonal Antibody

Product data:

Product Type:	Primary Antibodies
Applications:	WB
Reactivity:	Human
Host:	Rabbit
Clonality:	Polyclonal
Immunogen:	The immunogen is a synthetic peptide directed towards the middle region of human TUBB1
Specificity:	Expected reactivity: Human
Formulation:	Liquid. Purified antibody supplied in 1x PBS buffer with 0.09% (w/v) sodium azide and 2% sucrose. <i>Note that this product is shipped as lyophilized powder to China customers.</i>
Concentration:	lot specific
Purification:	Affinity purified
Conjugation:	Unconjugated
Storage:	For short term use, store at 2-8°C up to 1 week. For long term storage, store at -20°C in small aliquots to prevent freeze-thaw cycles.
Stability:	Shelf life: one year from despatch.
Predicted Protein Size:	50 kDa
Gene Name:	tubulin beta 1 class VI
Database Link:	NP_110400.1 Entrez Gene 81027 Human Q9H4B7
Background:	This gene encodes a member of the beta tubulin protein family. Beta tubulins are one of two core protein families (alpha and beta tubulins) that heterodimerize and assemble to form microtubules. This protein is specifically expressed in platelets and megakaryocytes and may be involved in proplatelet production and platelet release. A mutations in this gene is associated with autosomal dominant macrothrombocytopenia. Two pseudogenes of this gene are found on chromosome Y.
Synonyms:	dj543j19.4

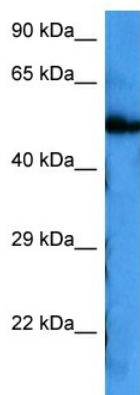


[View online »](#)

Protein Families: Druggable Genome

Protein Pathways: Gap junction, Pathogenic Escherichia coli infection

Product images:



Host: Rabbit
Target Name: TUBB1
Sample Type: HepG2 Cell Lysate
Antibody Dilution: 1.0 μ g/ml

Host: Rabbit
Target Name: TUBB1
Sample Tissue: Human HepG2 Whole Cell
Antibody Dilution: 1.0 μ g/ml