

## Product datasheet for **TA360637**

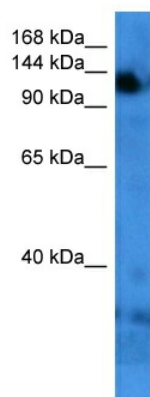
### AUTS2 Rabbit Polyclonal Antibody

#### Product data:

Product Type:	Primary Antibodies
Applications:	WB
Reactivity:	Human
Host:	Rabbit
Clonality:	Polyclonal
Immunogen:	The immunogen is a synthetic peptide directed towards the N terminal region of human AUTS2
Specificity:	<b>Expected reactivity:</b> Human
Formulation:	Liquid. Purified antibody supplied in 1x PBS buffer with 0.09% (w/v) sodium azide and 2% sucrose.
Concentration:	lot specific
Purification:	Affinity purified
Conjugation:	Unconjugated
Storage:	For short term use, store at 2-8°C up to 1 week. For long term storage, store at -20°C in small aliquots to prevent freeze-thaw cycles.
Stability:	Shelf life: one year from despatch.
Predicted Protein Size:	139 kDa
Gene Name:	autism susceptibility candidate 2
Database Link:	<a href="#">NP_001120703.1</a> <a href="#">Entrez Gene 26053 Human</a> <a href="#">Q8WXX7</a>
Background:	This gene has been implicated in neurodevelopment and as a candidate gene for numerous neurological disorders, including autism spectrum disorders, intellectual disability, and developmental delay. Mutations in this gene have also been associated with non-neurological disorders, such as acute lymphoblastic leukemia, aging of the skin, early-onset androgenetic alopecia, and certain cancers. Alternative splicing results in multiple transcript variants encoding different isoforms.
Synonyms:	FBRSL2; KIAA0442; MGC13140



[View online »](#)

**Product images:**

Host: Rabbit  
Target Name: AUTS2  
Sample Type: 786-0 Cell Lysate  
Antibody Dilution: 1.0 $\mu$ g/ml

Host: Rabbit  
Target Name: AUTS2  
Sample Tissue: Human 786-0 Whole Cell  
Antibody Dilution: 1.0 $\mu$ g/ml