

Product datasheet for **TA360629**

Lptm5 Rabbit Polyclonal Antibody

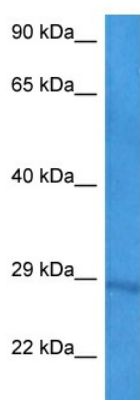
Product data:

Product Type:	Primary Antibodies
Applications:	WB
Reactivity:	Rat
Host:	Rabbit
Clonality:	Polyclonal
Immunogen:	The immunogen is a synthetic peptide directed towards the middle region of rat LPTM5
Specificity:	Expected reactivity: Rat
Formulation:	Liquid. Purified antibody supplied in 1x PBS buffer with 0.09% (w/v) sodium azide and 2% sucrose. <i>Note that this product is shipped as lyophilized powder to China customers.</i>
Concentration:	lot specific
Purification:	Affinity purified
Conjugation:	Unconjugated
Storage:	For short term use, store at 2-8°C up to 1 week. For long term storage, store at -20°C in small aliquots to prevent freeze-thaw cycles.
Stability:	Shelf life: one year from despatch.
Predicted Protein Size:	29 kDa
Gene Name:	lysosomal protein transmembrane 5
Database Link:	NP_445990.2 Entrez Gene 89783 Rat Q6P9Z7
Background:	a lysosomal protein involved in microglial activation [RGD, Feb 2006]
Synonyms:	CLAST6; FLJ61683; FLJ97251; KIAA0085; MGC125860; MGC125861



[View online »](#)

Product images:



Host: Rabbit
Target Name: Laptm5
Sample Type: Rat Liver Lysate
Antibody Dilution: 1.0 μ g/ml

Host: Rabbit
Target Name: LPTM5
Sample Tissue: Rat Liver lysates
Antibody Dilution: 1.0ug/ml