

## Product datasheet for **TA360627**

### SOCS4 Rabbit Polyclonal Antibody

#### Product data:

Product Type:	Primary Antibodies
Applications:	WB
Reactivity:	Human
Host:	Rabbit
Clonality:	Polyclonal
Immunogen:	The immunogen is a synthetic peptide directed towards the N terminal region of human SOCS4
Specificity:	<b>Expected reactivity:</b> Human
Formulation:	Liquid. Purified antibody supplied in 1x PBS buffer with 0.09% (w/v) sodium azide and 2% sucrose. <i>Note that this product is shipped as lyophilized powder to China customers.</i>
Concentration:	lot specific
Purification:	Affinity purified
Conjugation:	Unconjugated
Storage:	For short term use, store at 2-8°C up to 1 week. For long term storage, store at -20°C in small aliquots to prevent freeze-thaw cycles.
Stability:	Shelf life: one year from despatch.
Predicted Protein Size:	51 kDa
Gene Name:	suppressor of cytokine signaling 4
Database Link:	<a href="#">NP_543143.1</a> <a href="#">Entrez Gene 122809 Human</a> <a href="#">Q8WXH5</a>
Background:	The protein encoded by this gene contains a SH2 domain and a SOCS BOX domain. The protein thus belongs to the suppressor of cytokine signaling (SOCS), also known as STAT-induced STAT inhibitor (SSI), protein family. SOCS family members are known to be cytokine-inducible negative regulators of cytokine signaling. Two alternatively spliced transcript variants encoding the same protein have been found for this gene.
Synonyms:	CIS4; DKFZp686j1568; SOCS-4; SOCS-7; SOCS7; SSI4; STAT4

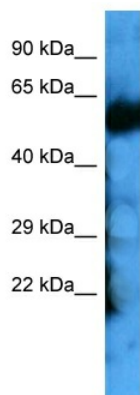


[View online »](#)

Protein Families: Druggable Genome

Protein Pathways: Insulin signaling pathway, Jak-STAT signaling pathway, Type II diabetes mellitus

### Product images:



Host: Rabbit  
Target Name: SOCS4  
Sample Type: HepG2 Cell Lysate  
Antibody Dilution: 1.0 $\mu$ g/ml

Host: Rabbit  
Target Name: SOCS4  
Sample Tissue: Human HepG2 Whole Cell  
Antibody Dilution: 1.0 $\mu$ g/ml